

# 21525 PEASON AVENUE, SONOMA



- Approx. 2 level acres
- Single story, 3bd/2ba home with new paint inside and outside
- Open great room with exposed beam ceiling
- Detached 3-car garage + studio
- Two gated driveways
- Usable land offers room for: pool, pool house, shop, car barn and agricultural dreams
- Easy access to downtown Sonoma, Napa & San Francisco

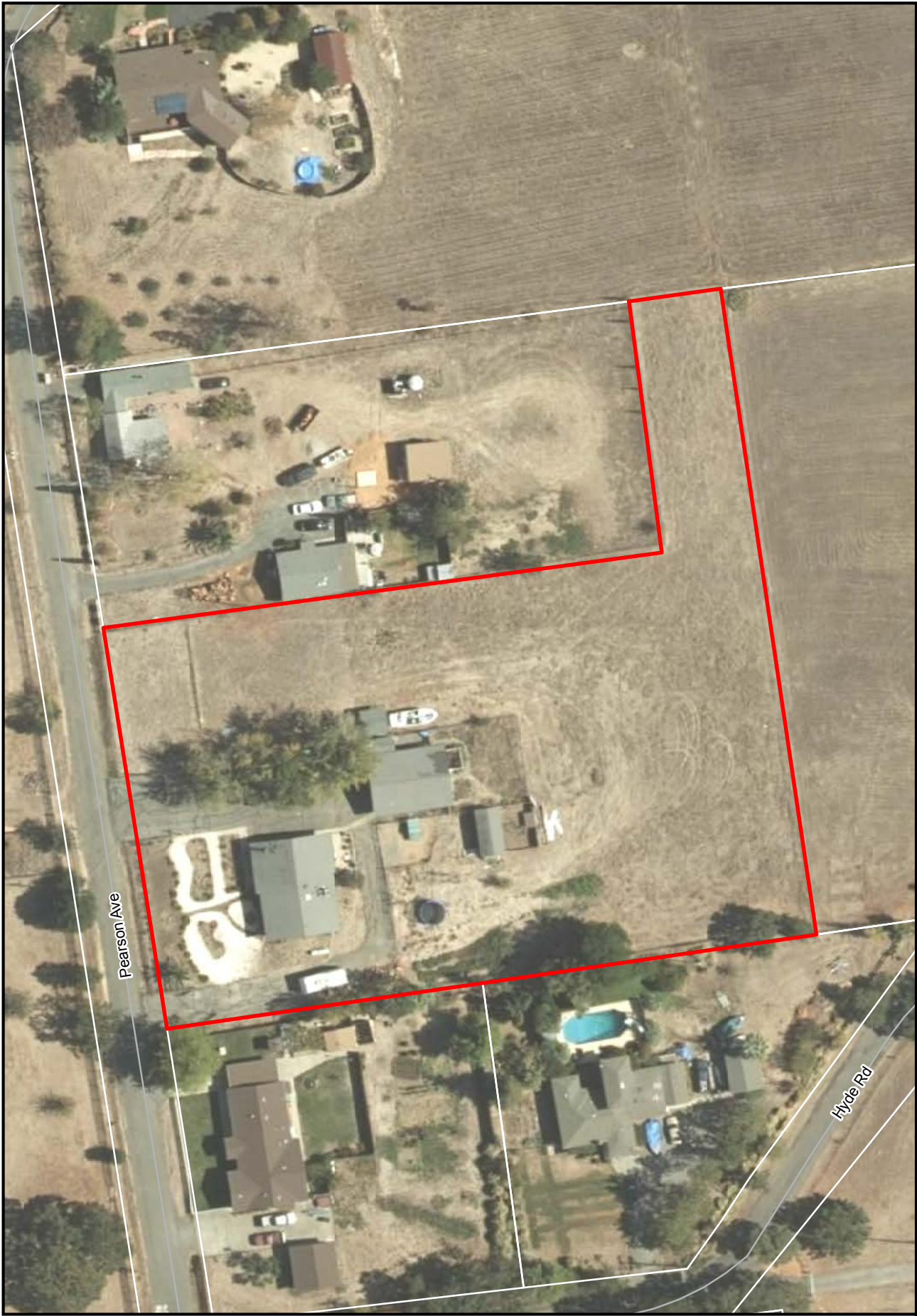
Offered at \$1,500,000 | [21525PearsonAve.com](http://21525PearsonAve.com)

**TINA SHONE** / **GROUP**  
*wine country expertise 1980—now*

**Sotheby's**  
INTERNATIONAL REALTY

Operated by Sotheby's International Realty, Inc. Sotheby's International Realty® is a registered trademark. Sotheby's International Realty does not guarantee the accuracy of square footage, lot size, or other information concerning the condition or features of the property provided by the seller or obtained from public records or other sources, and the buyer is advised to independently verify the accuracy of that information through personal inspection with appropriate licensed professionals.

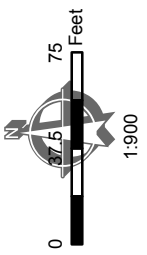
EVAN SHONE | 707.328.9288  
[evanshone.re@gmail.com](mailto:evanshone.re@gmail.com) | DRE# 01967200



Pearson Ave

Hyde Rd

APN 126-072-011



Black and White Aerials from April 2000; Color Aerials from Fall 2013. The 2013 imagery used a Ground Sample Distance (GSD) resulting in a 4-band (near infrared, red, green & blue), with 6 inch spatial resolution per pixel. The specified coordinate system for this dataset is California State Plane Zone II (FIPS 0402), NAD83 (2011), with units in US Survey Feet. Map Scale and Reproduction methods limit precision in physical features displayed. This map is for illustrative purposes only, and is not suitable for parcel-specific decision making. Assessor's Office does not warrant the accuracy of the data. Assessor's parcel data are current as of October 15, 2018.

# 2013 Aerial

County of Sonoma  
 Permit and Resource Management Department

2550 Ventura Avenue, Santa Rosa, California 95403  
 707-565-1900 FAX 707-565-1103

